

# Click Reply Suite 2015



# Company Profile



**Click Reply** is a **Reply group** company that offers a complete range of advanced services and solutions in the sphere of Supply Chain Execution. These range from the design and modeling of logistic procedures to the planning of turnkey application solutions and the introduction of new technologies.

Click Reply bases its solutions on proprietary suite Click Reply™, built around the main module for the Warehouse Management, but with specialized modules for Yard Management, Warehouse Billing, Warehouse Performance and Labor Management.

Click Reply is present with offices in Italy, UK, Germany, USA and Brazil.







**SAP® Certified**  
Integration with SAP Applications



More than  
30.000 Click users



# Services Portfolio

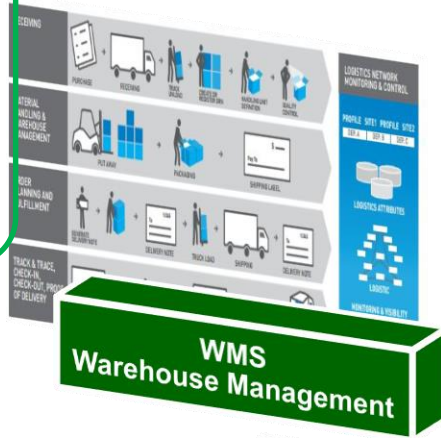
	<b>DESIGN</b>	ON PLANT SURVEY	BPMN DESIGN	CAPABILITY MAPPING	BUSINESS PROCESS DESCRIPTION	SHARING & VALIDATION
	<b>REALIZE</b>	FUNCTIONAL ANALYSIS	TEST CASES REDACTION	TECHNICAL DESIGN	DEVELOPMENT	TESTING
	<b>COMMISSION</b>	ON PLANT INTEGRATION TESTS	UAT EXECUTION AND SUPPORT	CUTOVER ORGANIZATION	DATA MIGRATION	GO-LIVE & POST GO-LIVE
	<b>CHANGE MANAGEMENT</b>	PROCESS CHANGE ANALYSIS AND DOCUMENTATION		TECHNICAL CHANGE MANAGEMENT		CHANGE CUTOVER AND GO-LIVE
	<b>APPLICATION MAINTENANCE</b>	24/7 MAINTENANCE TEAM	SERVICE LEVEL AGREEMENT MANAGEMENT		1ST 2ND AND 3RD LEVEL OF MAINTENANCE SUPPORT	
	<b>CONTINUOS IMPROVEMENT</b>	RESEARCH & DEVELOPMENT		TECHNOLOGY REFRESH		PROCESS CHANGE MANAGEMENT



# Click Reply Suite

## Click WM 4.6

- JVoice
- New User Experience
- Web Configuration
- Product Inbound Packaging



## Click LM 2.1

- Time & Attendance
- Workforce Scheduling
- Capacity Planning
- Goal Time & Feedback
- Performance



## Click WB 1.2

- Active and Passive Cycle
- Contractual Revenues and Costs
- Reporting



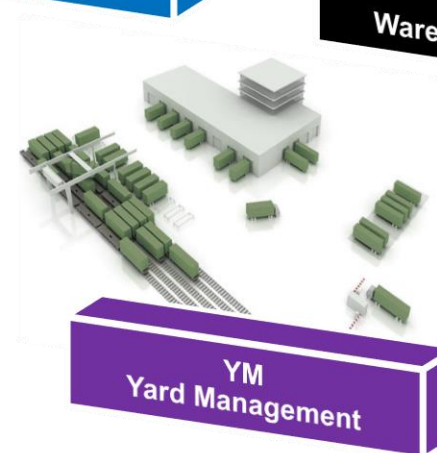
## Click WP 2.0

- Standard version
- Enterprise (Qlik View)



## Click YM 2.0

- Gate Flow
- Yard Management
- Dock Management



# Click Reply 4 - Deployment Architecture

Browser



MS Windows

Application server  
& http server



MS Windows  
UNIX



Database server



MS Windows  
UNIX



# Click Reply – Execution Tools

## GUI – Interest Driven



## Integration



**SAP® Certified**  
Integration with SAP Applications

J D EDWARDS

Baan

STEALTH 3000

ORACLE®

Microsoft Dynamics AX

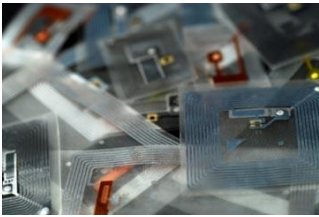
## Hands and Eyes Free (Voice)



## Mobile & Event Management



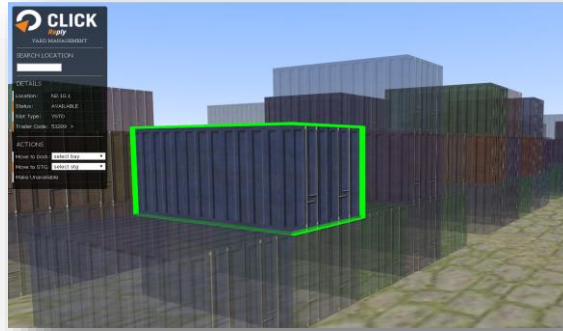
## Precise and Effective (RFID)



## Automation



# Click Reply & Upcoming Future .....



- Augmented Reality
- Visual Management
- Gamification
- Consumer Mobile Platform
- In Memory Database, Big Data
- Industrial Internet

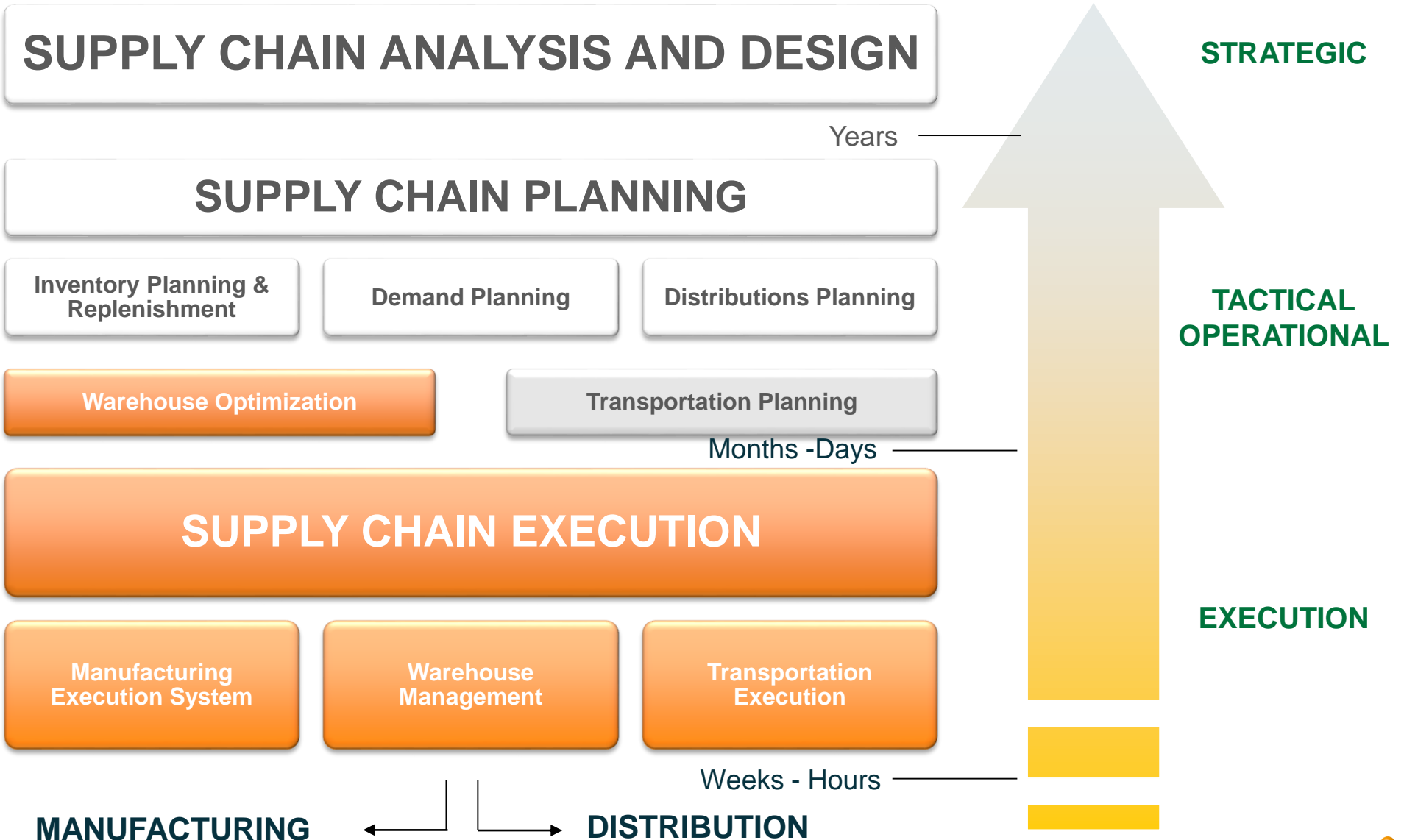


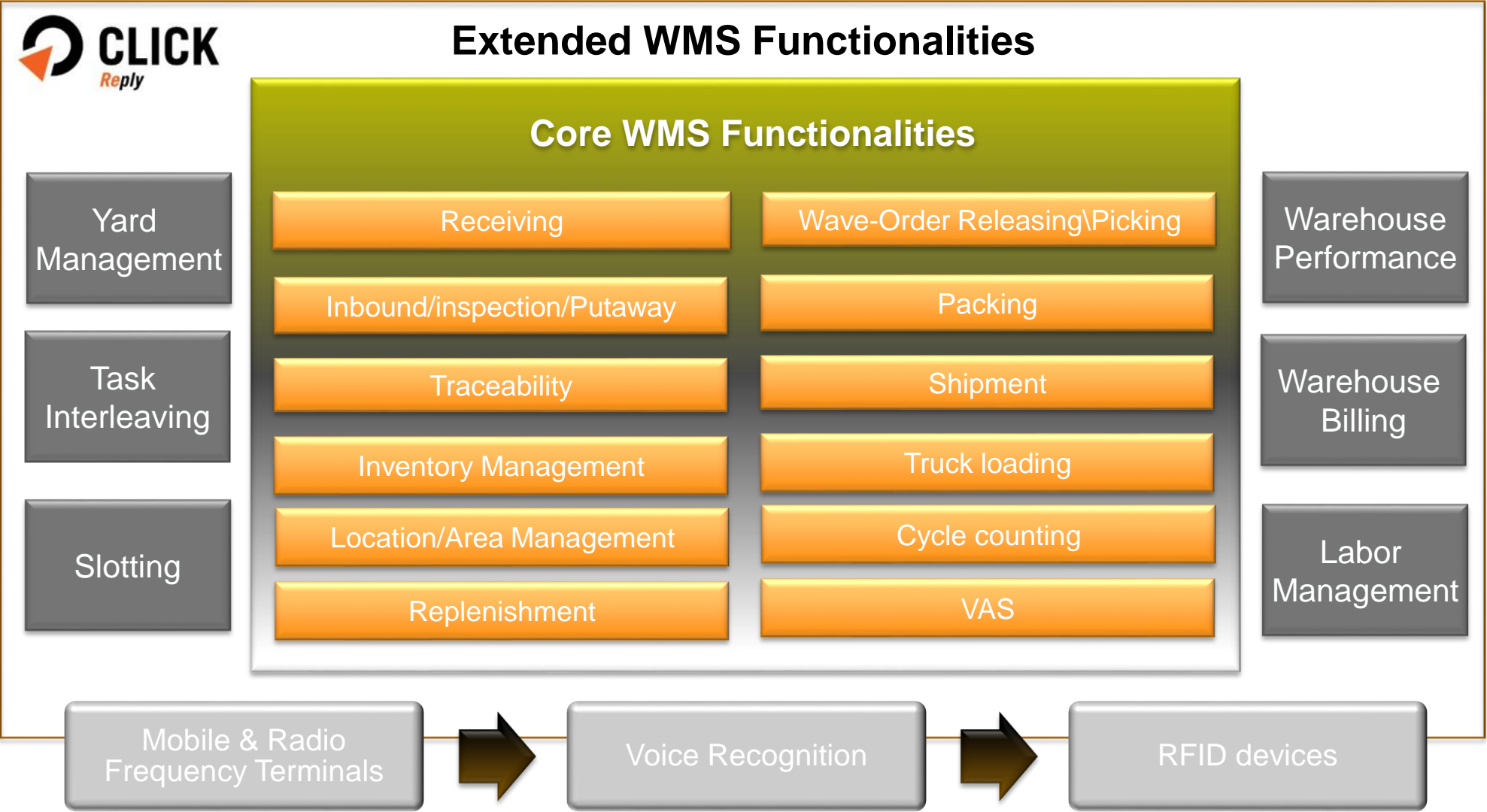
Click Reply Suite

**OFFERING**



# Click Reply™ WM – Processes Landscape





# Warehouse Management

# Functions Set

## Receiving

- Delivery notes
- Unsold items
- Receiving from production
- Accounting receiving
- Physical receiving
- Received quantities control
- Quality control
- Supplier order

## Put away

- Physical put away
- Slot assignment
- Container mono and multi reference
- Container composition
- Pallet composition
- Put away missions
- Deposit optimisation
- Labelling

## Shipping and Picking

- Planning
- Scheduling
- Picking missions
- Occupation strategy
- Shipping packages composition
- Delivery notes
- Trips
- Freight notes

## Map and Inventory

- Physical position
- Accounting and physical material handling
- Batch management
- Quarantine
- Tracing & Traceability
- Processing
- Assigned picking positions
- Stock property

## Multi site

- Multi site
- Virtual Stock
- Transfer
- Orders distribution
- Joint inventory

## Execution systems

- Radio frequency terminals
- Barcode
- RFID
- Voice terminals
- Automation systems
- Printings management

## Additional processes

- Pallets and containers management
- Production lines supply
- JiT management
- Client boxes management

## Tools and configuration

- Multi-language option
- Rules configuration
- Planned operations
- Monitoring and alarms
- External systems interface



# Yard Management

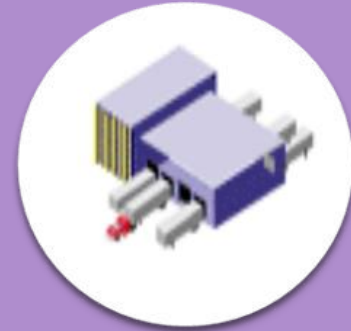
# Function Set



GATE FLOW



YARD MANAGEMENT



DOCK MANAGEMENT

Inbound

Outbound

Empty

Direct To Dock

Direct To Yard

Combined Cycle

## Check In

Expectation → Registration → Authorization

Prioritization → Queuing → Addressing

## Check Out

Tasks status control → Plate control

Exit Registration → Block / Re addressing

## Task Management

Tasks Dispatching → Tasks Execution

## Trailer Management

Internal Movement Task → Stock Visibility

## Yard Map Management

Map / Slot Configuration → Slot Status Management

## Loading / Unloading

Staging → Recall

Request To Dock → Release

Request To Yard → Remove

## Activities

Sealing / Unsealing → Weighing



# Yard Management

# Highlights

Control & Execute!

Gate Flow

Interactive Yard Map  
Yard Management

Monitor & Act  
Dock Management

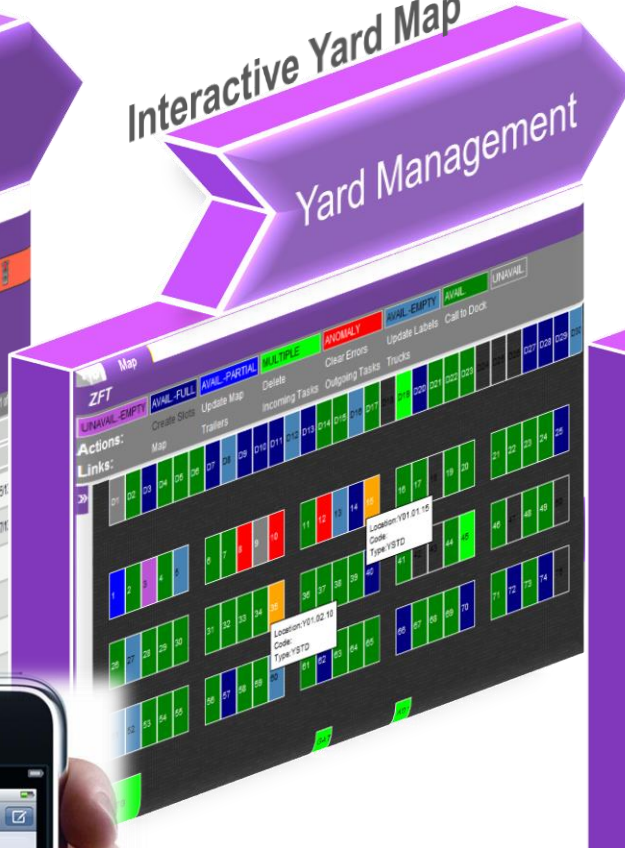


- Master Data
- Gate Flow
  - Transits
  - Transit Issues
  - Transit Analysis
  - Transits Insert
  - Upload Transits
  - Download Truck Flows
  - Imported Transits
  - Check In
  - Addressing
  - Check Out
- Yard Management
- Dock Management
- Inquiry
- Monitor & Report
- Setup Environment
- Administration

Expected Transits	Truck Address	Trucking Company	General	Accepted	General
General(24)	Expected(24)	Recalled(1)			

Transit	Code	Type	Process Type	Urgent	Expected Plate	Country	Expected Carrier	Expected Code	VM Ref.	From
1	00000275	MAN	IN				0875	925213	4:00 PM	9251
2	00000276	MAN	IN				012345	927113	9:00 AM	9271
3	00000284	MAN	CHARGE				JA07			
4	00000277									
5	00000278									
6	00000279									

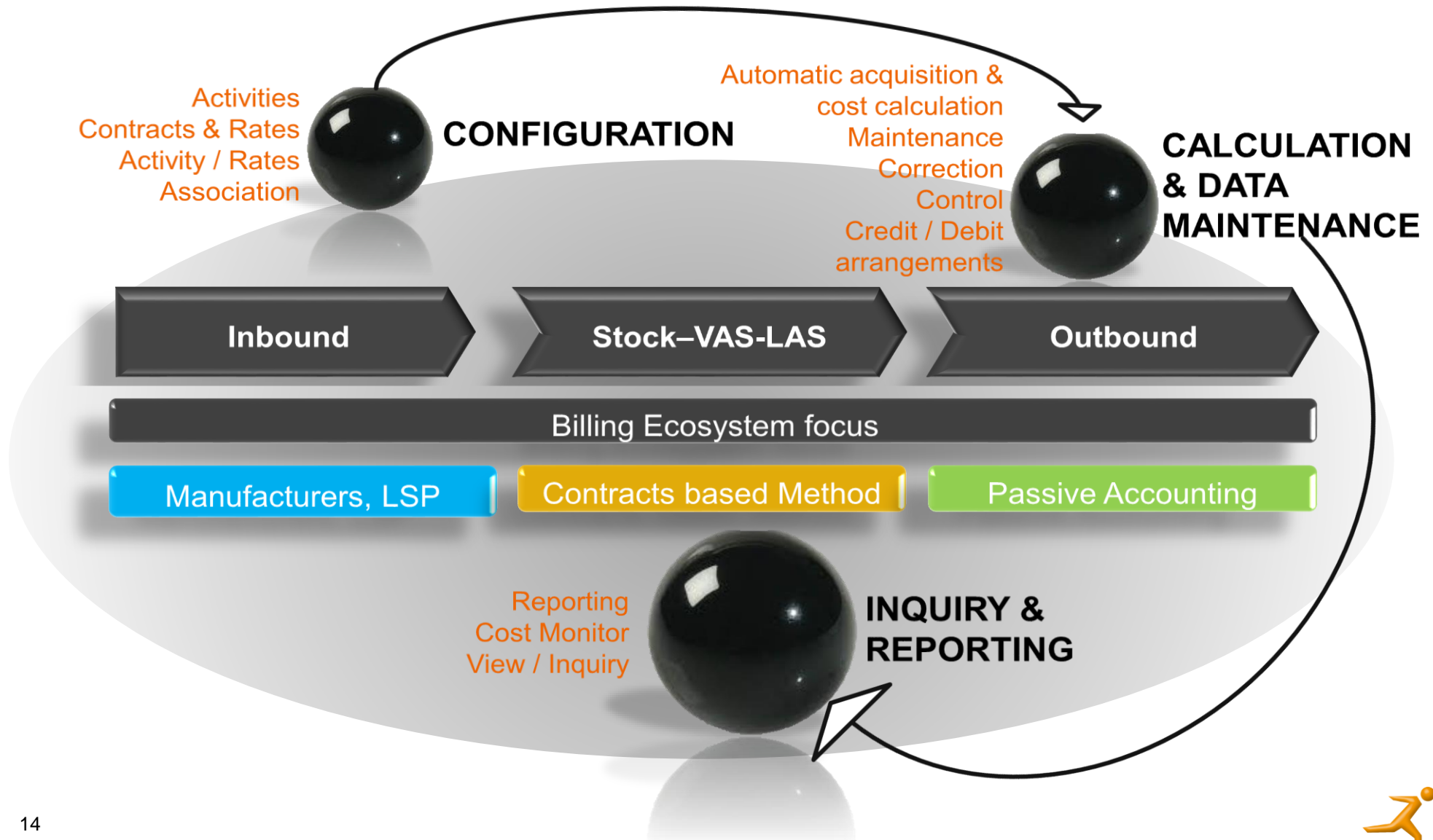


Trailer	Code	Plate	Carrier Code	Country	Trailer Type	Code	Type	Cycle	Phase	Phase Status	Release Date	Start Date	End Date	Remark
1	DE	00000000	SAP000000	IT	EMPTY TRAILER	SP000004	MAN	INBOUND	LOAD	WAITING				
2	DE	00000001	SAP000000	IT	EMPTY TRAILER	SP000004	MAN	INBOUND	LOAD	WAITING				
3	DE	00000002	SAP000000	IT	EMPTY TRAILER	SP000004	MAN	INBOUND	LOAD	WAITING				
4	DE	00000003	SAP000000	IT	EMPTY TRAILER	SP000004	MAN	INBOUND	LOAD	WAITING				
5	DE	00000004	SAP000000	IT	EMPTY TRAILER	SP000004	MAN	INBOUND	LOAD	WAITING				
6	DE	00000005	SAP000000	IT	EMPTY TRAILER	SP000004	MAN	INBOUND	LOAD	WAITING				
7	DE	00000006	SAP000000	IT	EMPTY TRAILER	SP000004	MAN	INBOUND	LOAD	WAITING				
8	DE	00000007	SAP000000	IT	EMPTY TRAILER	SP000004	MAN	INBOUND	LOAD	WAITING				



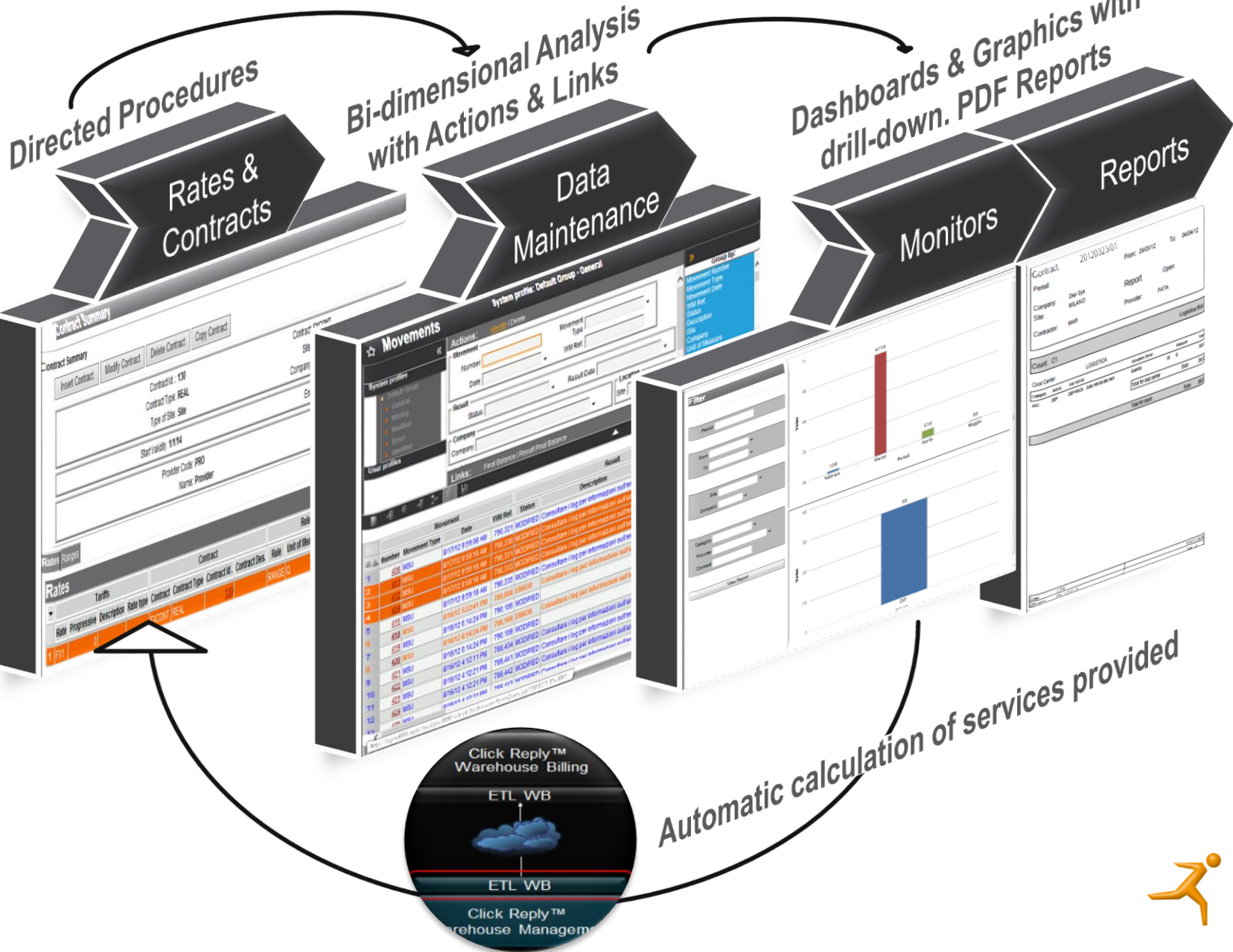
Event Management





# Warehouse Billing

# Highlights



**CLICK Reply Warehouse Billing**

- Rules And Contracts
  - Partner Master Data
  - Contracts Configuration
  - Cost Category
  - Activities Configuration**
    - Import Activity
    - Import Activity Detail
    - Activities-Rates Match
- Management
- Inquiry
- Monitor & Report
- ETL Monitor
- Setup Environment
- Administration
- Logout

**Contract Summary**

Contract Summary: Inset Contract, Modify Contract, Delete Contract, Copy Contract

Contract Id: 120  
Contract Type: REAL  
Type of Site: Site  
Start Validity: 01/14  
Provider Code: PRD  
Name: Provider

Rate	Progressive	Description	Rate type	Contract	Contract Type	Contract Des.	Contract Des.	Unit of Mea
1	FX			PROG	REAL			RANGE/LS

**Movements**

System profiles: Default Group - General

Number	Movement Type	Date	VHM Ref.	Status	Description
1	MOVU	01/17/12 9:09:09 AM	790.321	MODIFIED	Consultare log per informazioni sulla
2	MOVU	01/17/12 9:09:18 AM	790.330	MODIFIED	Consultare log per informazioni sulla
3	MOVU	01/17/12 9:09:34 AM	790.331	MODIFIED	Consultare log per informazioni sulla
4	MOVU	01/17/12 9:09:48 AM	790.330	MODIFIED	Consultare log per informazioni sulla
5	MOVU	01/17/12 5:22:41 PM	790.200	LEGHED	Consultare log per informazioni sulla
6	MOVU	01/16/12 0:14:24 PM	790.100	MODIFIED	Consultare log per informazioni sulla
7	MOVU	01/16/12 0:14:24 PM	790.109	MODIFIED	Consultare log per informazioni sulla
8	MOVU	01/16/12 4:32:11 PM	790.434	MODIFIED	Consultare log per informazioni sulla
9	MOVU	01/16/12 4:32:21 PM	790.441	MODIFIED	Consultare log per informazioni sulla
10	MOVU	01/16/12 4:32:21 PM	790.442	MODIFIED	Consultare log per informazioni sulla
11	MOVU				
12	MOVU				

**Filter**

Period: From: To: Site: Company: Contract: View Report

**Monitors**

Bar chart showing values for different periods.

**Reports**

Contract: 20120323/01  
Period: From: 2012/12 To: 2012/12  
Company: Do Site: MIANO Report: Open  
Site: Provider: PATA  
Contractor: MAR

Cost Center: C1  
Location: C1  
Period: 2012/12/01 - 2012/12/31





## RECEIVING

ASN by status

Jobs

Document by Quantity,  
Weight, Volume, HU

ASN



## STOCK & MAP

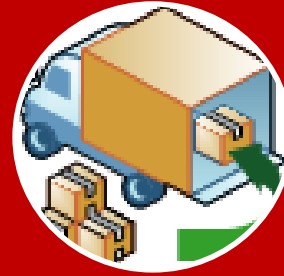
Stock by Site

Stock by Company

Map Occupancy

Stock Analysis

Items Analysis



## SHIPMENT

Order by Status

Order by Quantity,  
Weight, Volume, HU

Jobs

Shipped Volumes

Orders

Shipped Volumes



## PRODUCTIVITY

Movements

Jobs

Workers

Packaging

Jobs Analysis

Trend by Site

Trend by Company

Average Jobs

Dashboard

Trend



Receiving Shipments Stock & Map Productivity

Visual Metrics & Stats

Real Time monitoring of strategic activities to control and verify their progression

KPI Pre-Packed for My Business Dashboard

Drag & Drop

Common Filters management per dashboard

Multi Drill Down

DrillDown - Jobs per Type

Detailed content visibility & excel export

## Worker, Team & Shift

- Holidays
- Scheduling
- Absents
- Extra Times
- Available



## Manpower Planning

- Needed
- Available
- Lacking
- Over
- Re-Scheduling



## Goal Time

## Performance

## Operation

- Idle/Unmeasured
- Indirect
- Direct
- Performance
- Productivity



## Task & Work

- Work Config
- Task Config
- Drivers & Classes
- Physical Map
- Equipment Type



## Time & Attendance

- Attendances
- Early / Delay



- Clock In/Out
- Direct / Indirect Activities



# Labor Management at a Glance

